



COMUNE DI VEGLIE

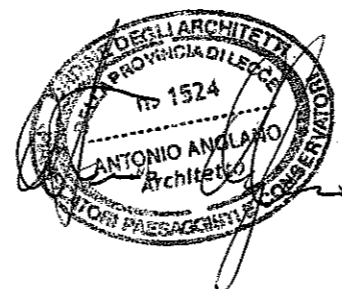
PROVINCIA DI LECCE

-SETTORE AMBIENTE E POLITICHE ENERGETICHE-

**INSTALLAZIONE DI IMPIANTI FOTOVOLTAICI SU
SUPERFICI DI PROPRIETA' COMUNALE
"TETTI FOTOVOLTAICI"**

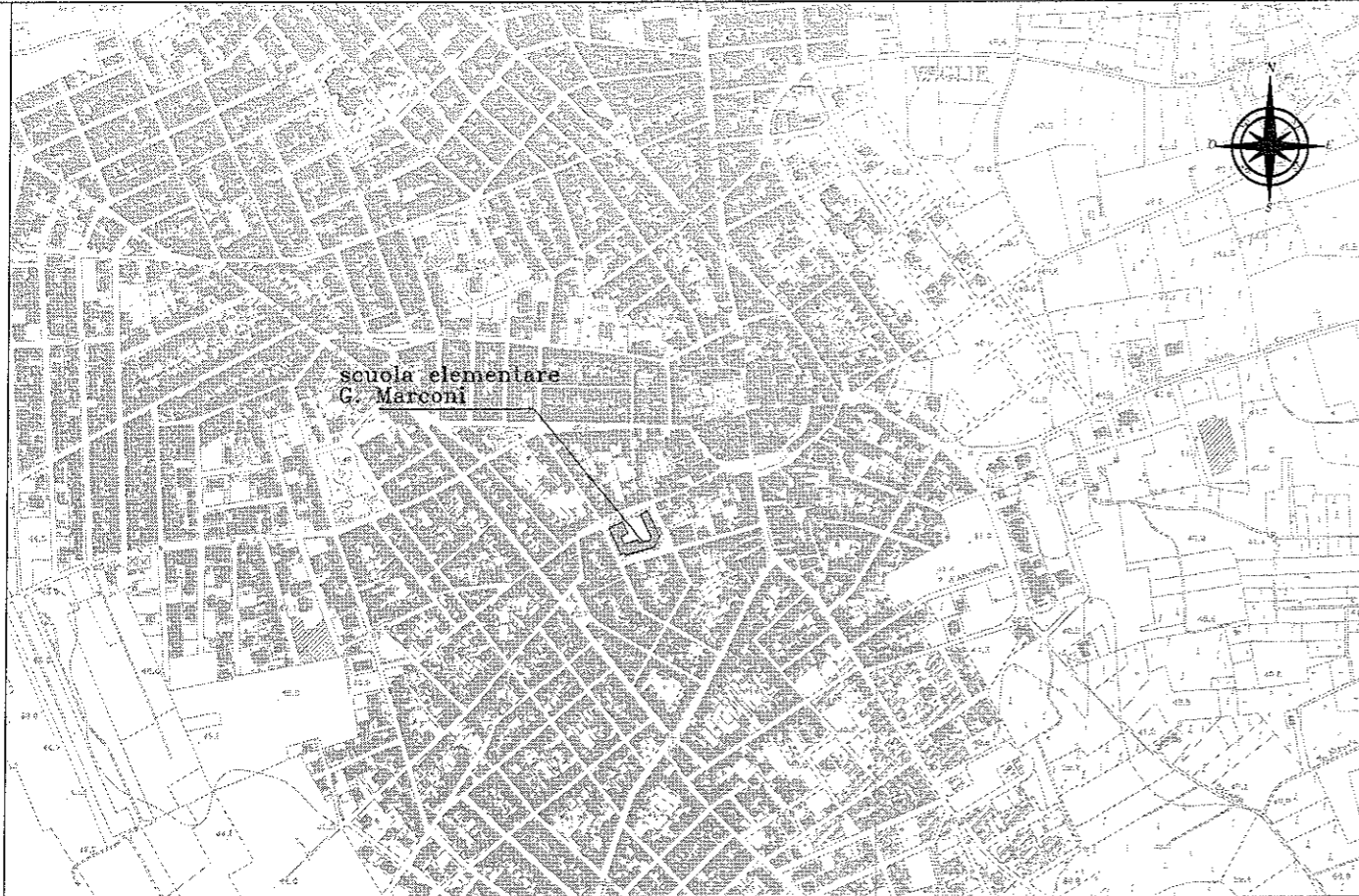
- ELABORATI GRAFICI -

Veglie

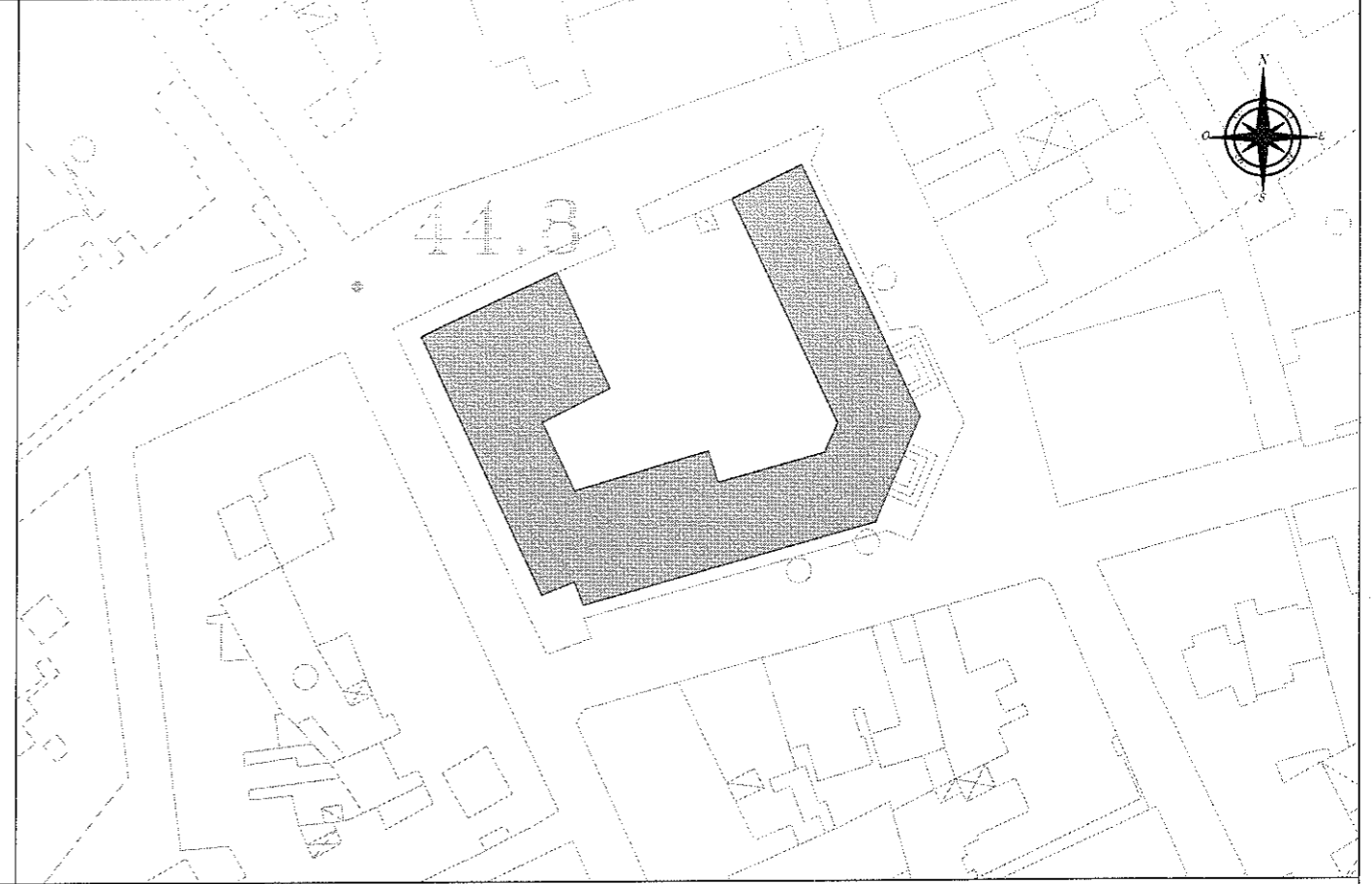


Luglio 2012

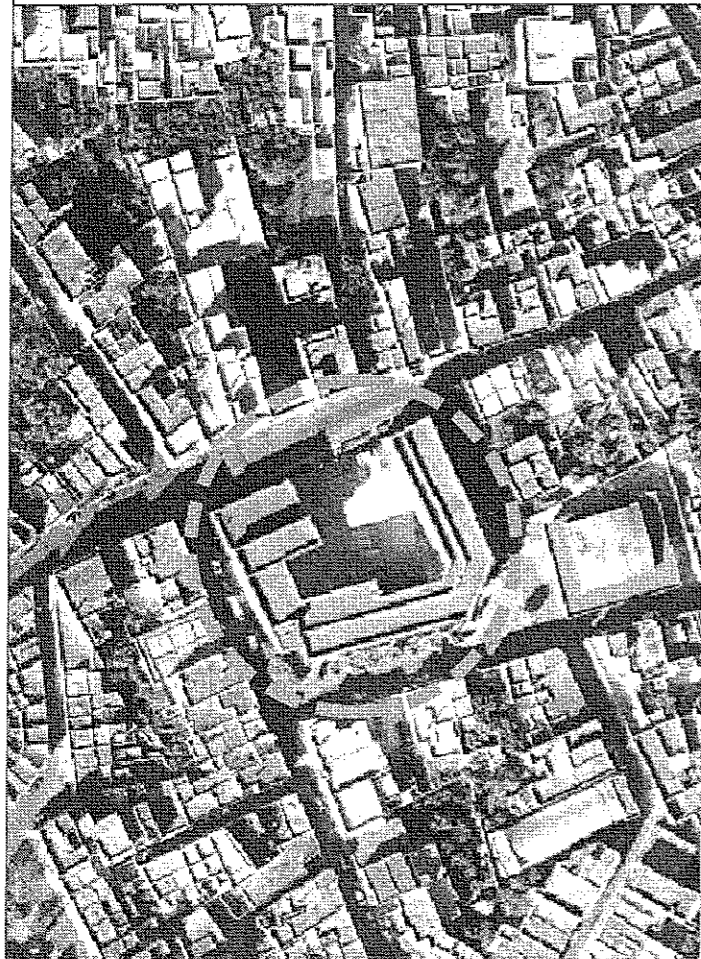
-EDIFICIO F- Scuola Elementare Guglielmo Marconi



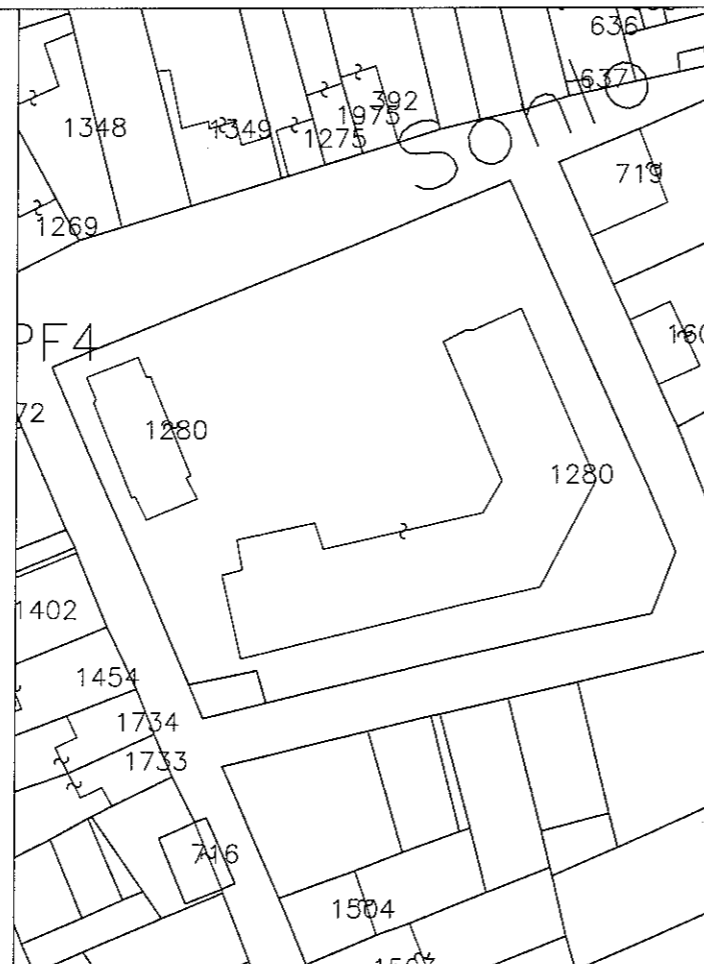
Inquadramento territoriale: Stralcio aerofotogrammetrico scala 1:10.000



Area di interesse scala 1:1000



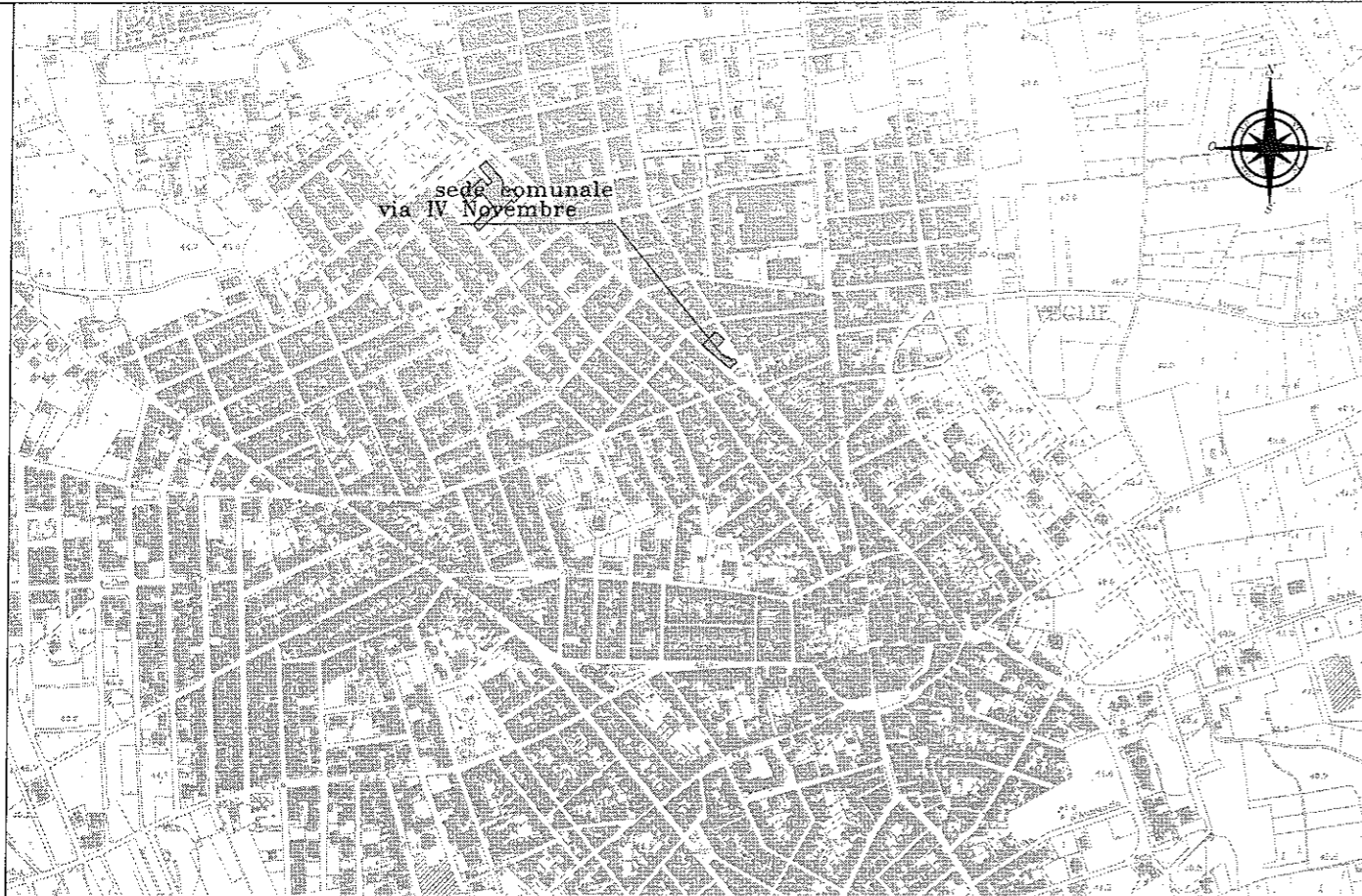
Stralcio Ortofoto: fonte SIT Regione Puglia



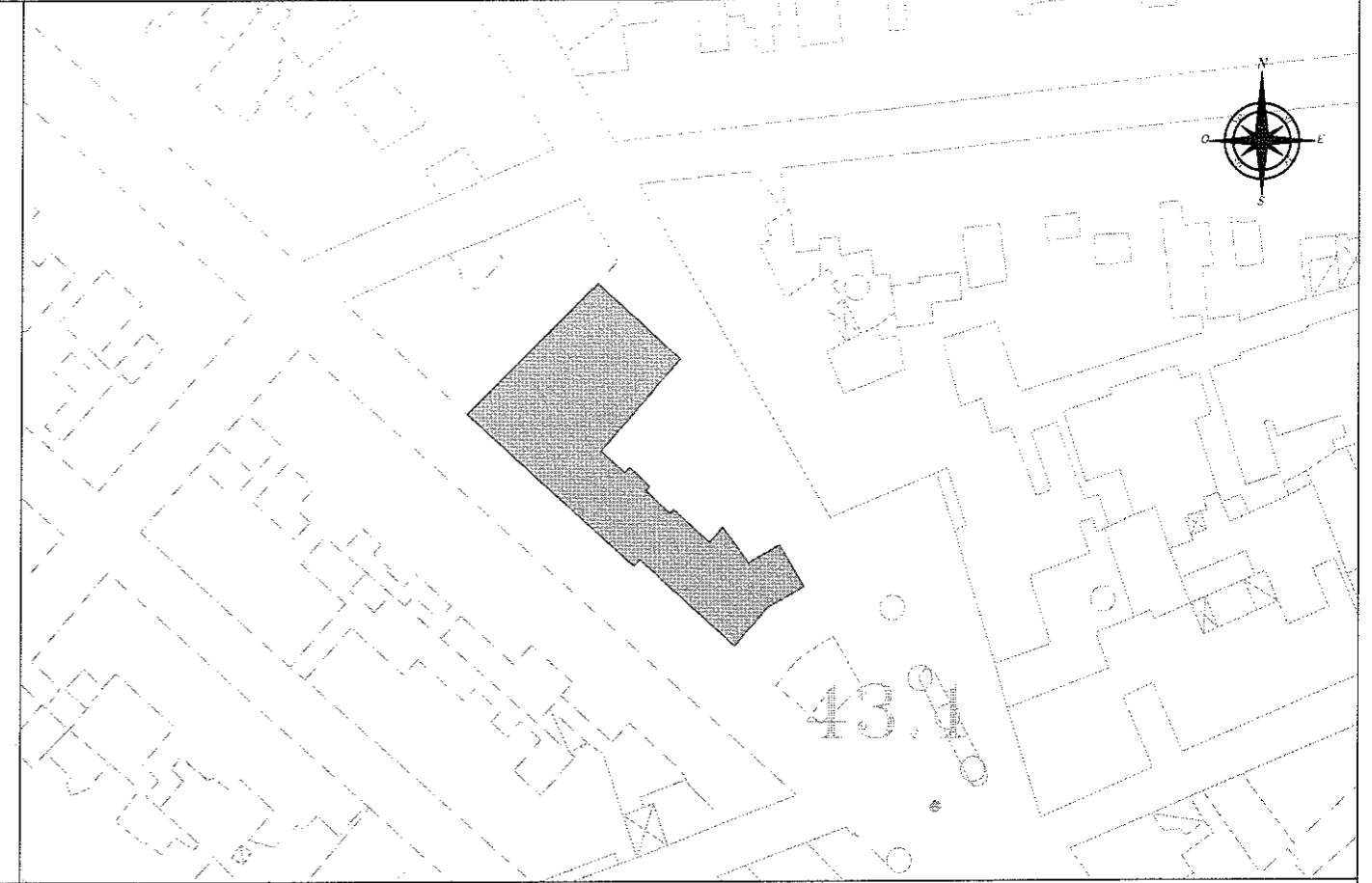
Stralcio catastale foglio 29 p.IIa 1280 scala 1:1000



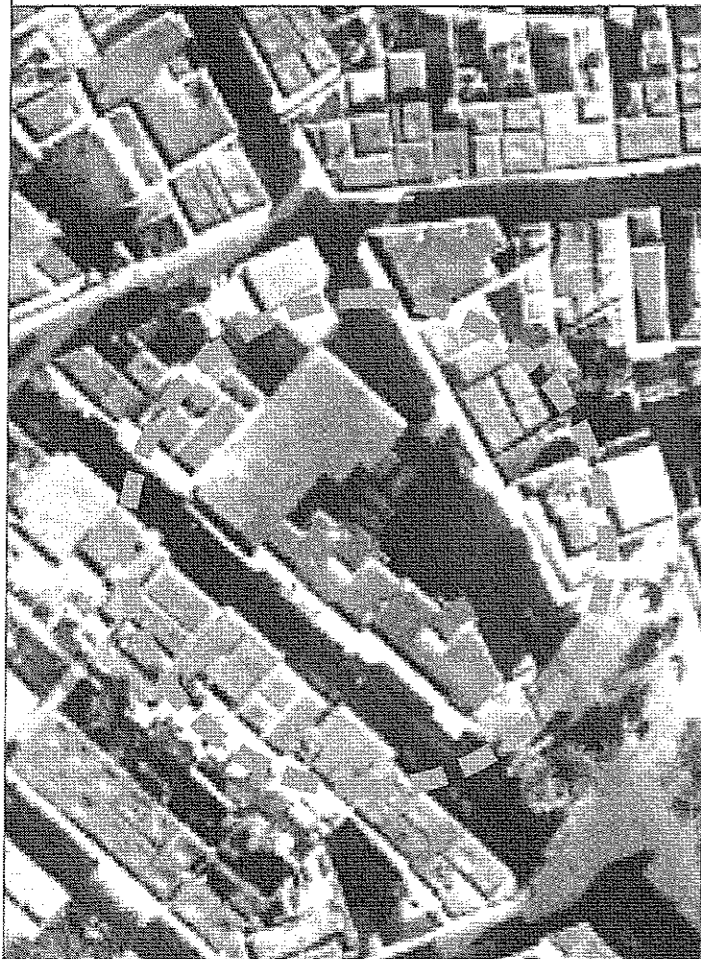
-EDIFICIO H- Sede Comunale via IV Novembre



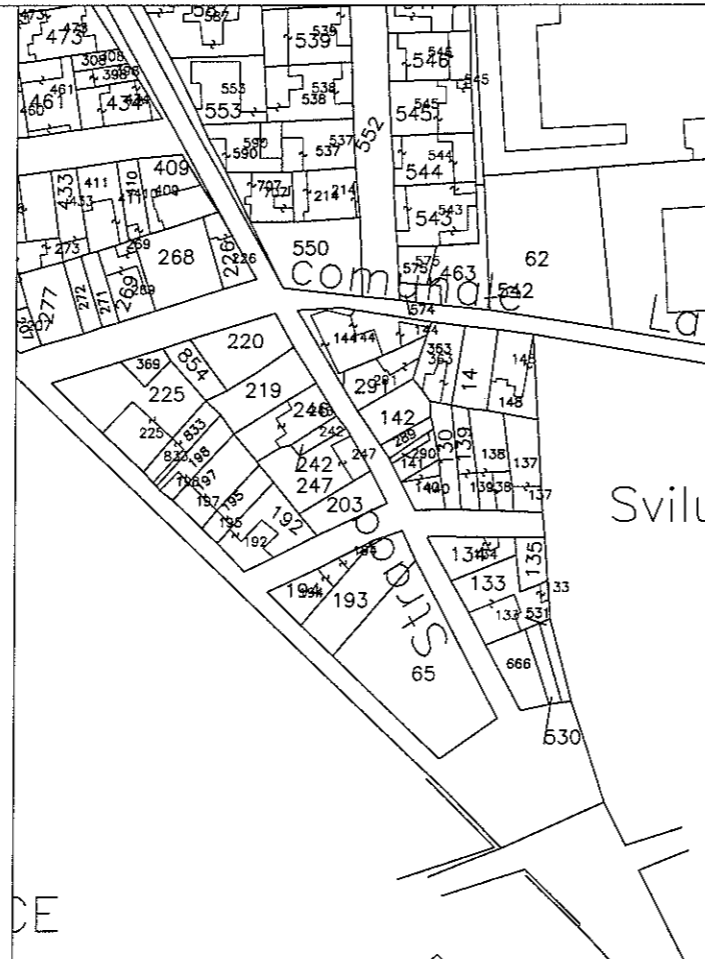
Inquadramento territoriale: Stralcio aerofotogrammetrico scala 1:10.000



Area di interesse scala 1:1000



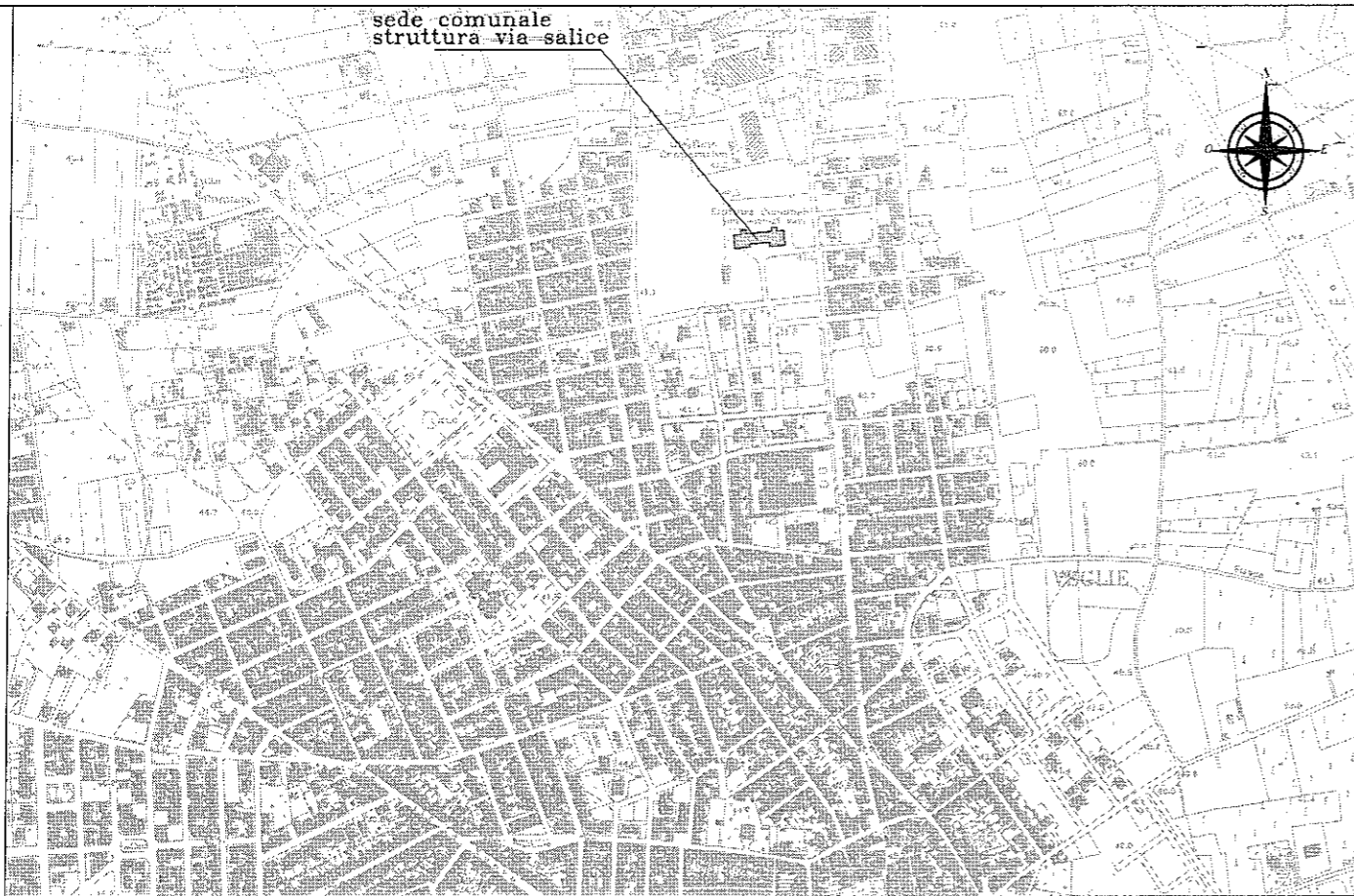
Stralcio Ortofoto: fonte SIT Regione Puglia



Stralcio catastale foglio 23 p.IIa 65 scala 1:2000



-EDIFICIO I- Sede Comunale struttura di via Salice



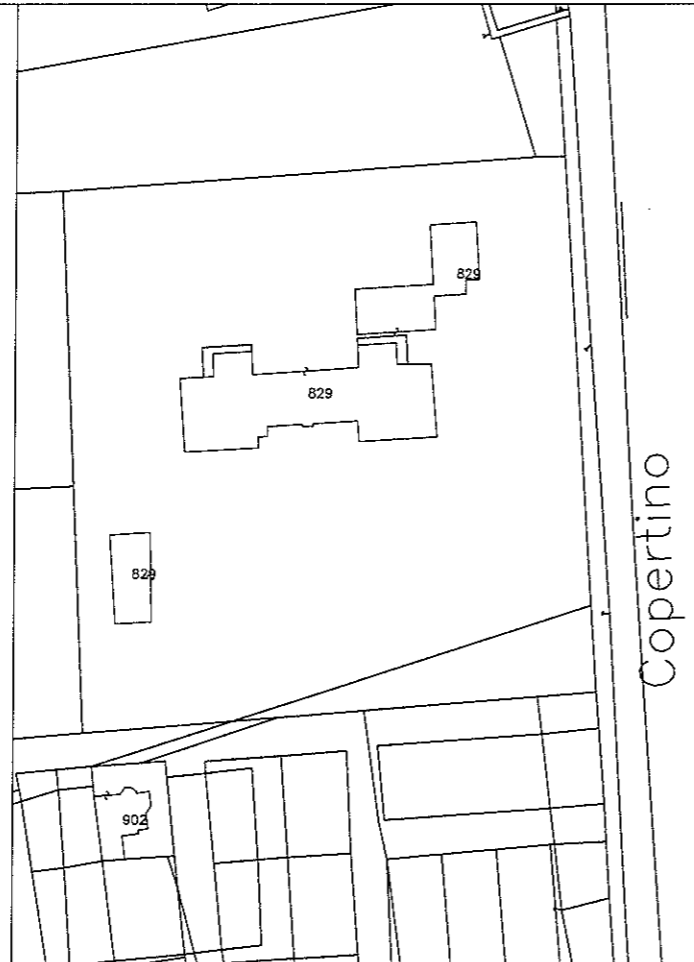
Inquadramento territoriale: Stralcio aerofotogrammetrico scala 1:10.000



Area di interesse scala 1:1000



Stralcio Ortofoto: fonte SIT Regione Puglia



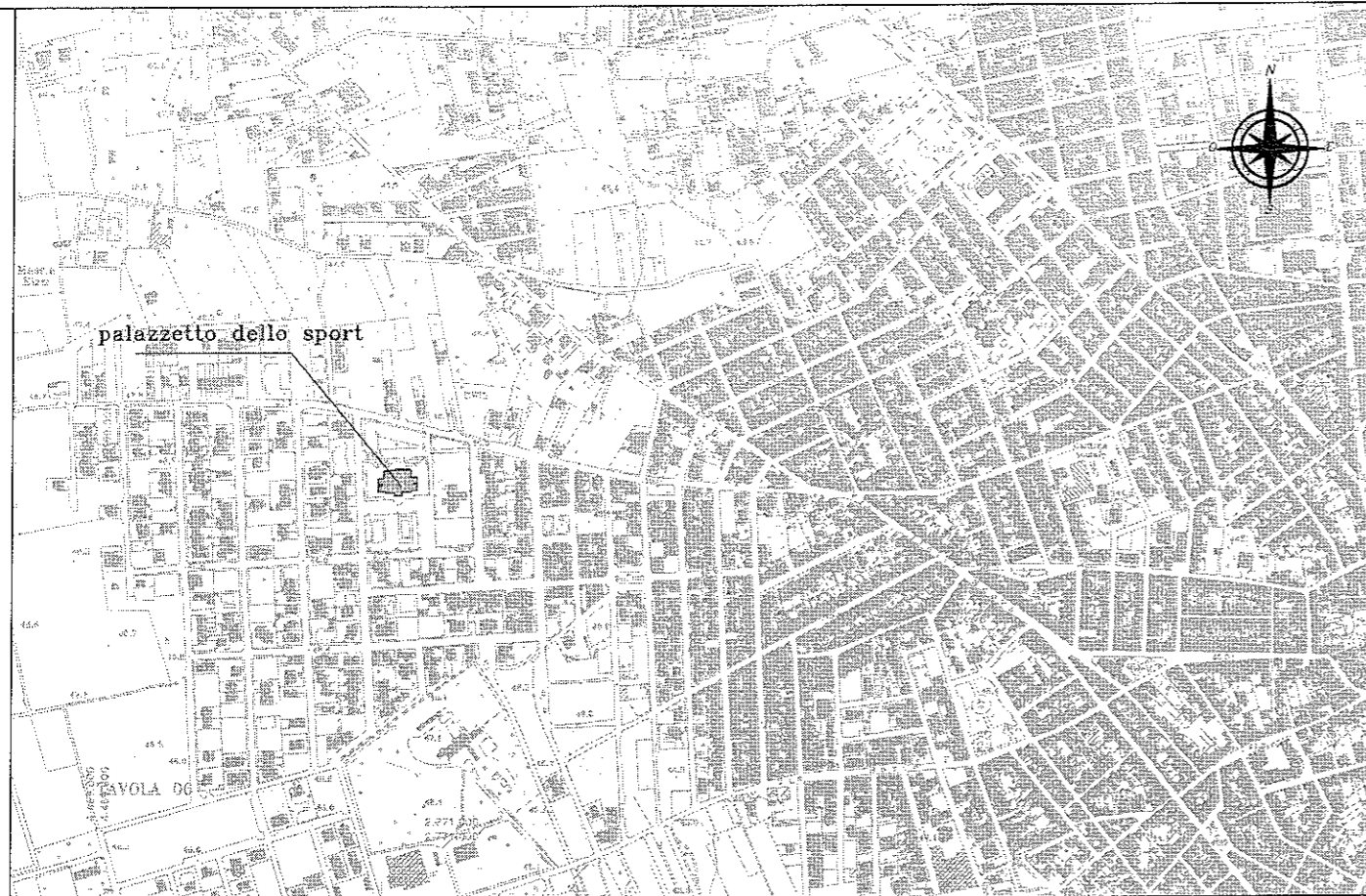
Stralcio catastale foglio 23 p.IIa 829 scala 1:2000



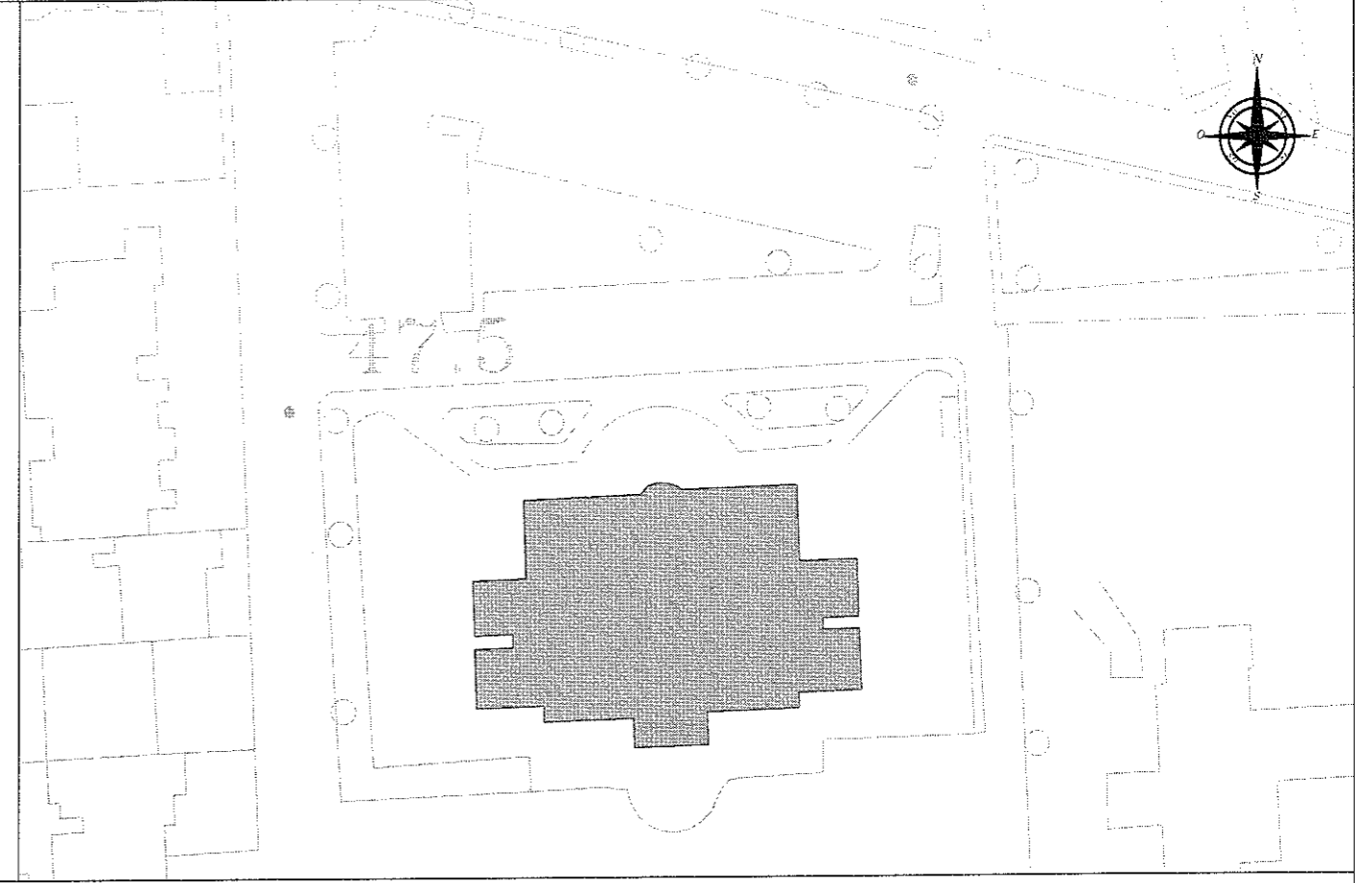
Antonio Aniano



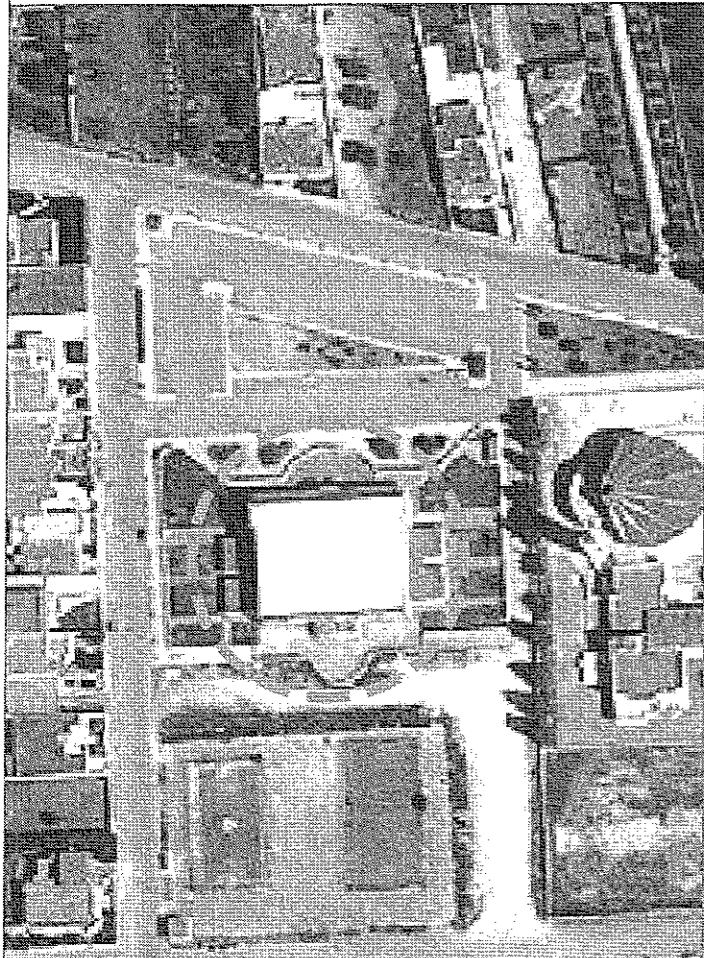
-EDIFICIO J- Palazzetto dello Sport



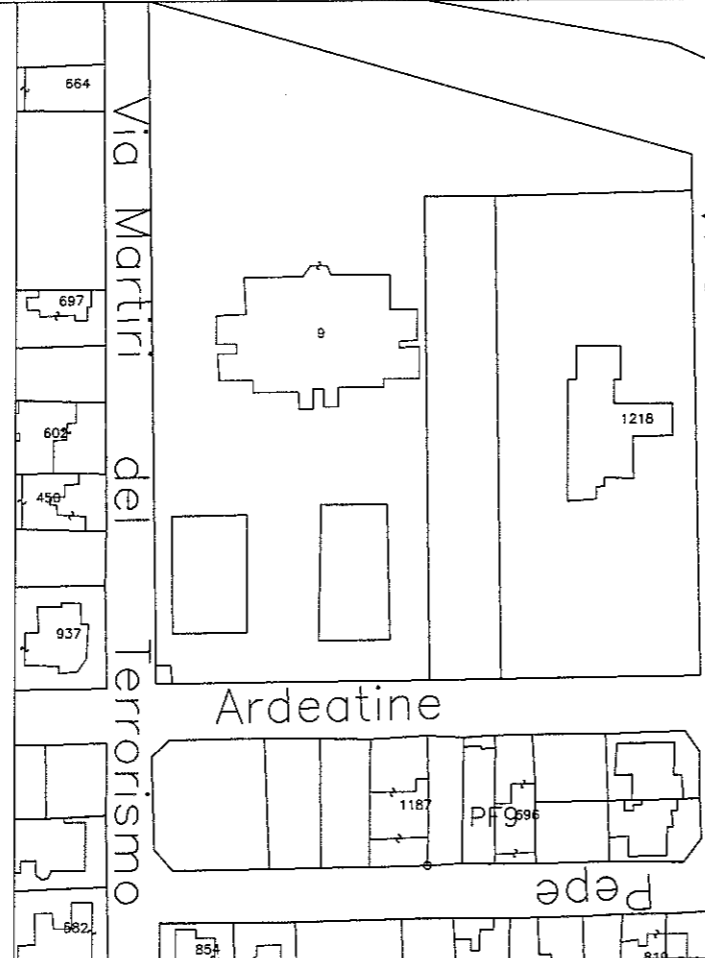
Inquadramento territoriale: Stralcio aerofogrammetrico scala 1:10.000



Area di interesse scala 1:1000



Stralcio Ortofoto: fonte SIT Regione Puglia



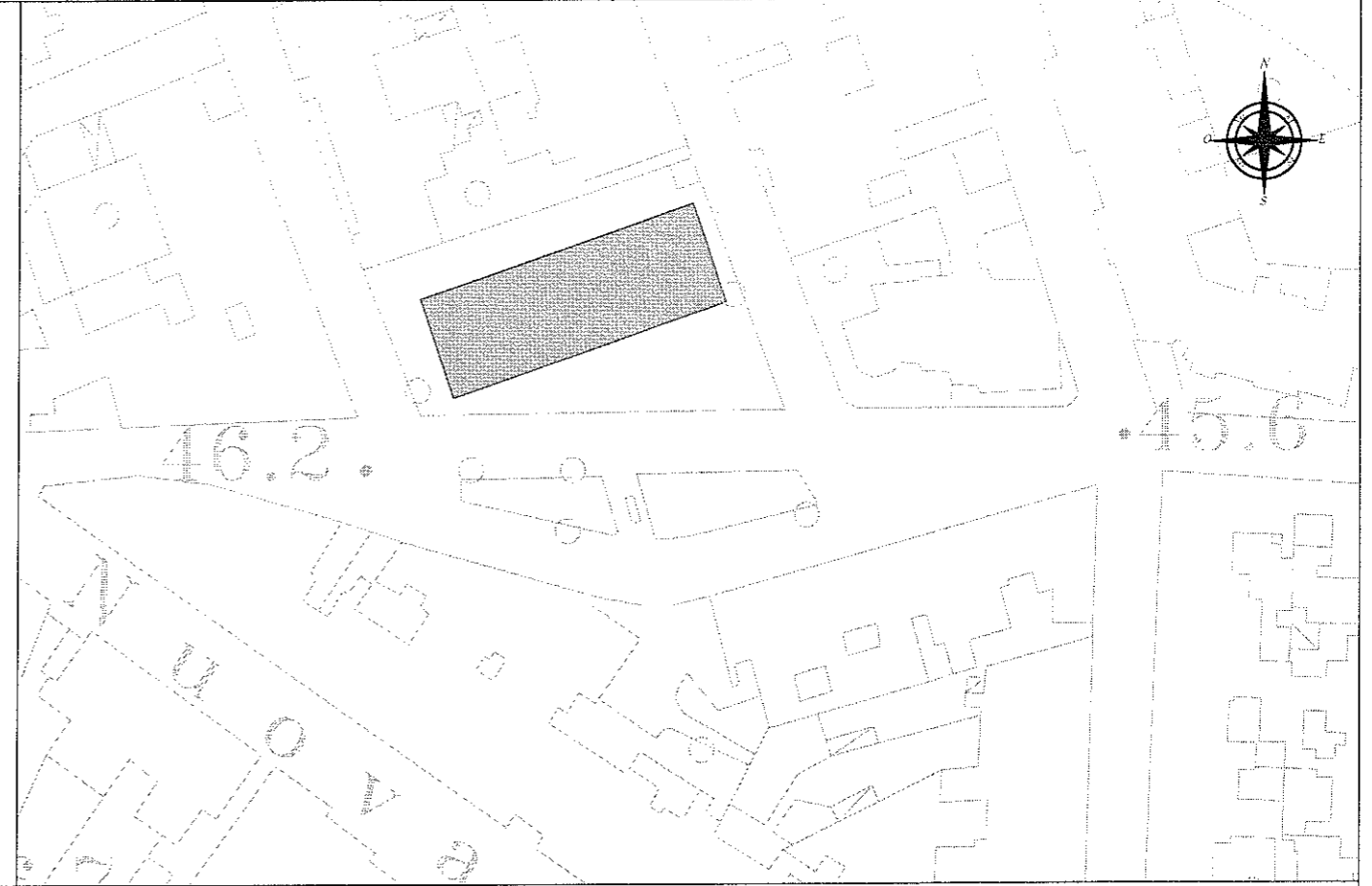
Stralcio catastale foglio 27 p.IIa 9 scala 1:2000



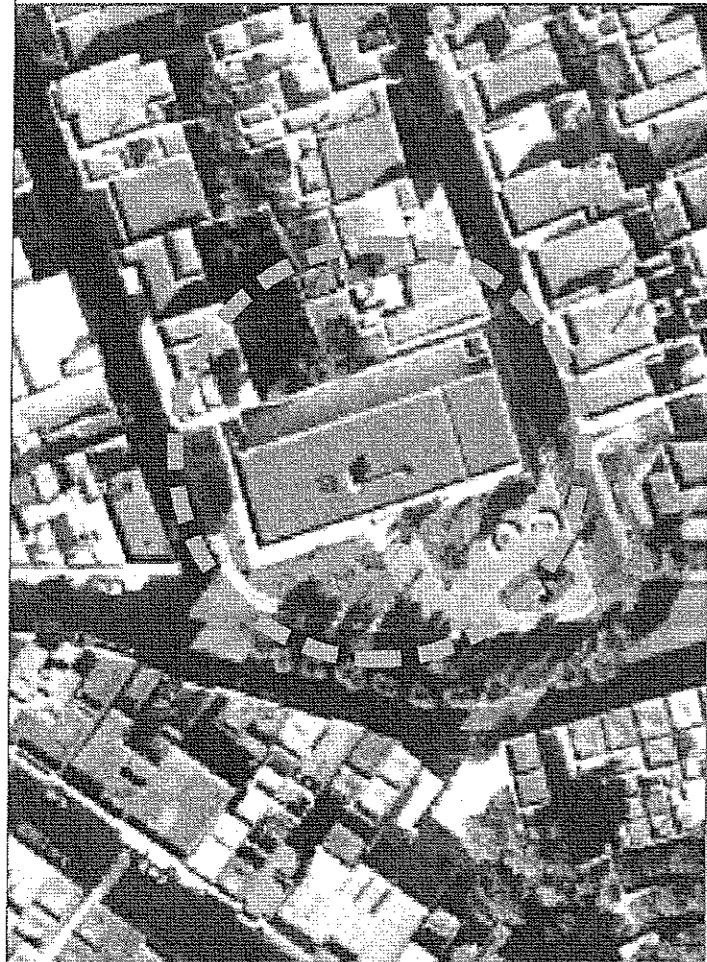
-EDIFICIO K- Biblioteca Comunale



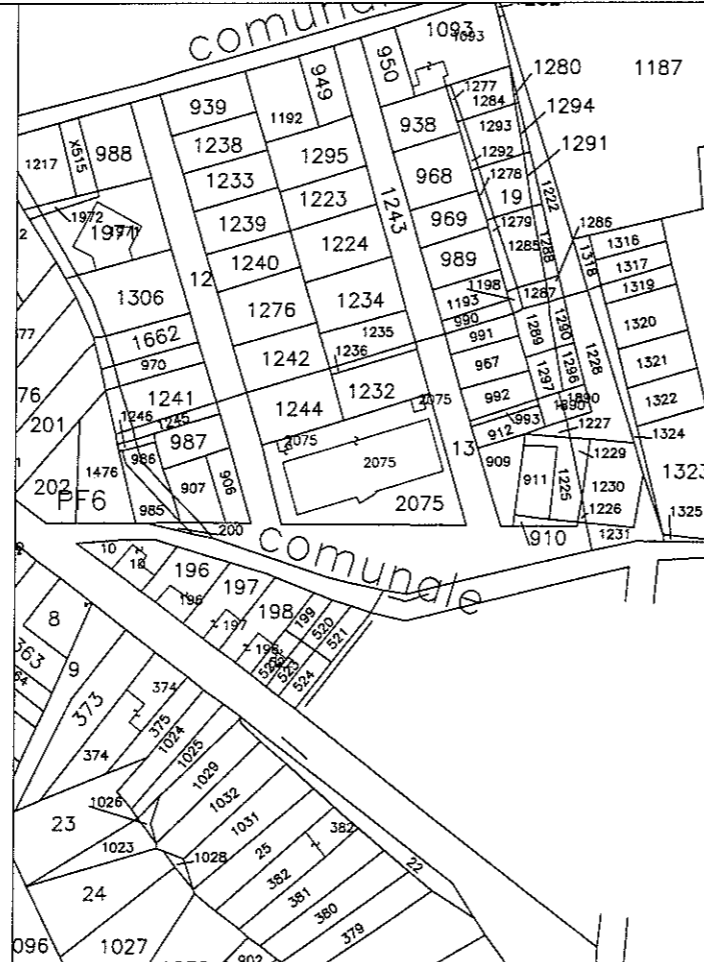
Inquadramento territoriale: Stralcio aerofotogrammetrico scala 1:10.000



Area di interesse scala 1:1000



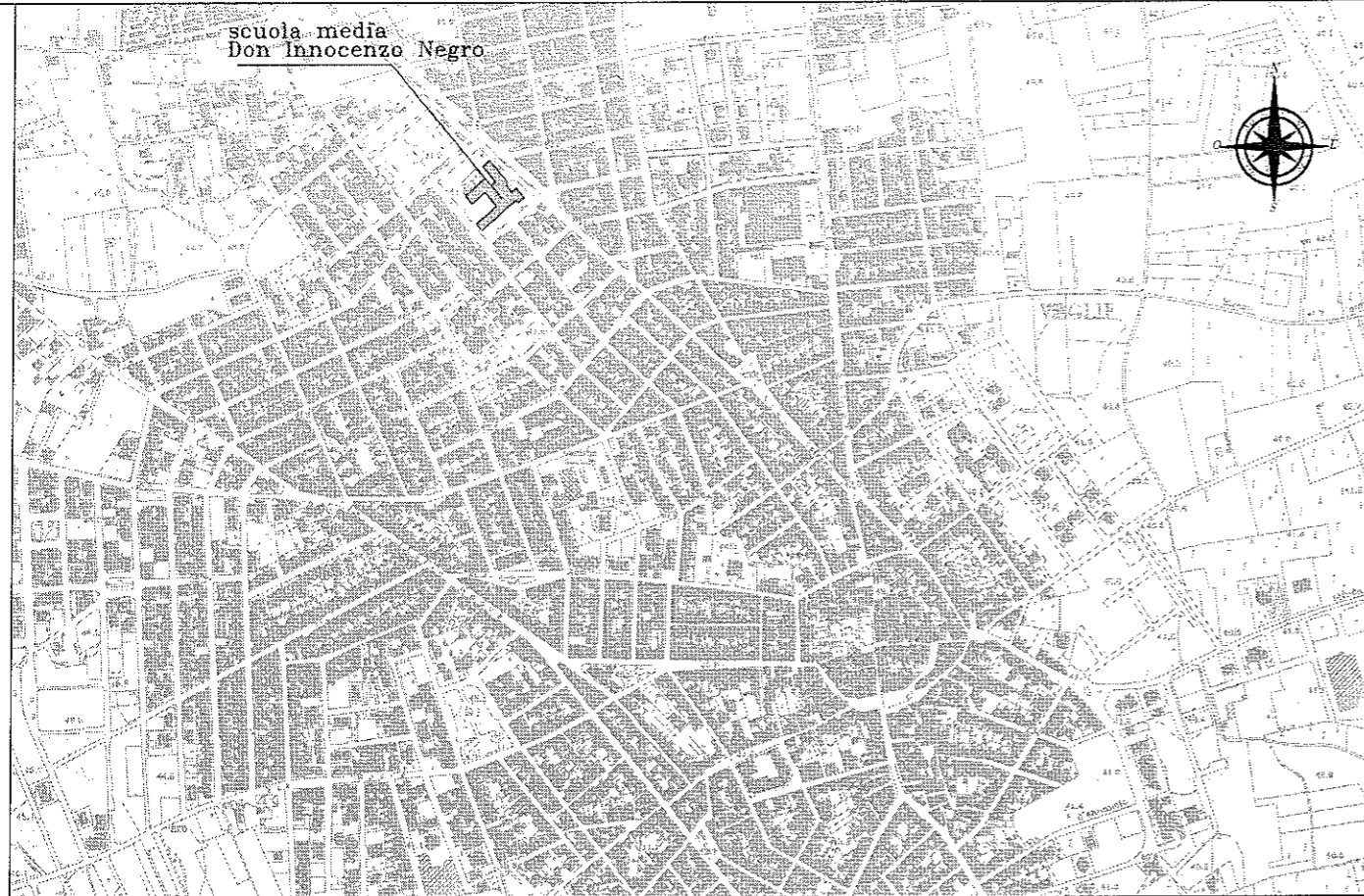
Stralcio Ortofoto: fonte SIT Regione Puglia



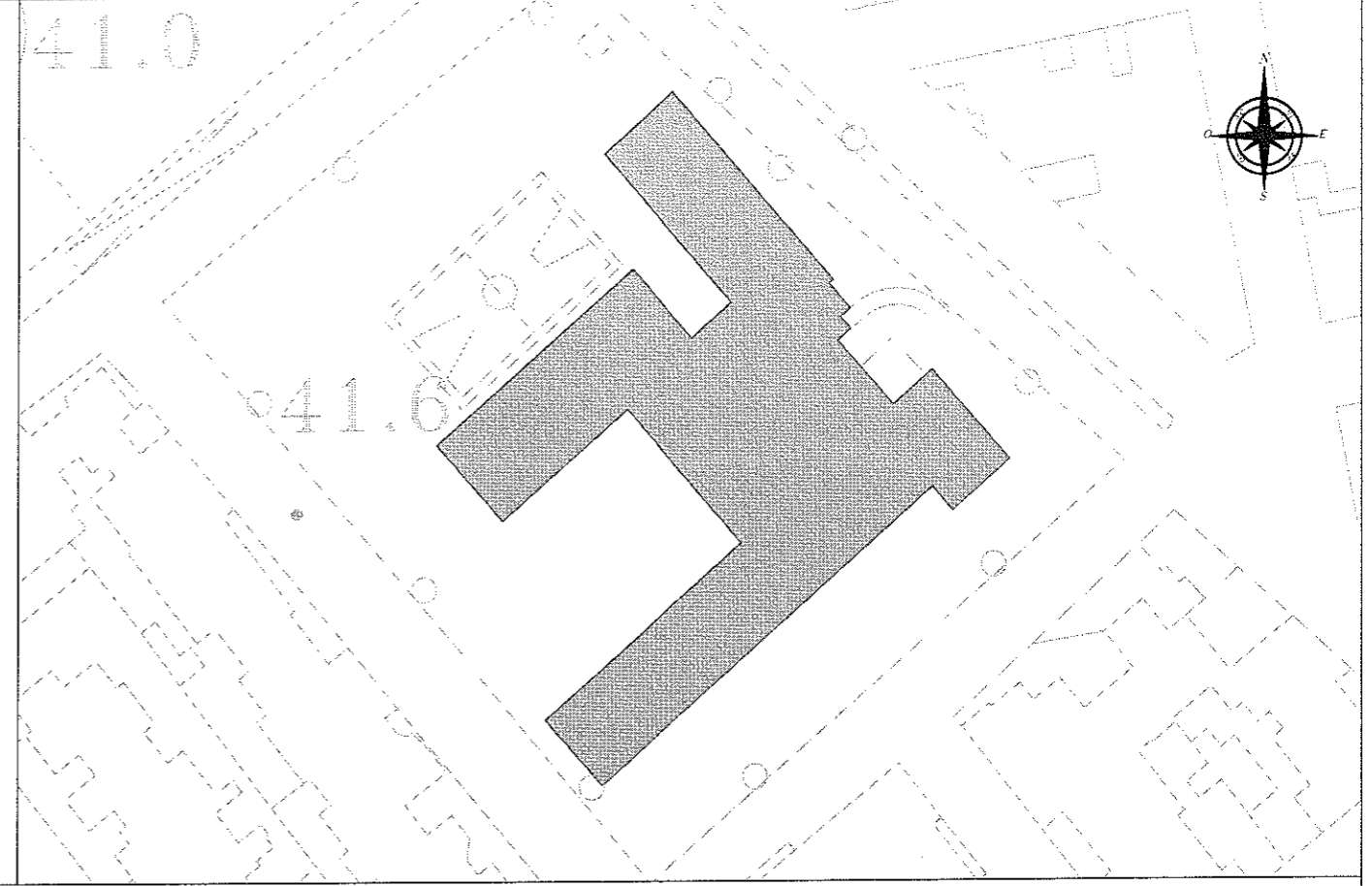
Stralcio catastale foglio 28 p.IIa 2075 scala 1:2000



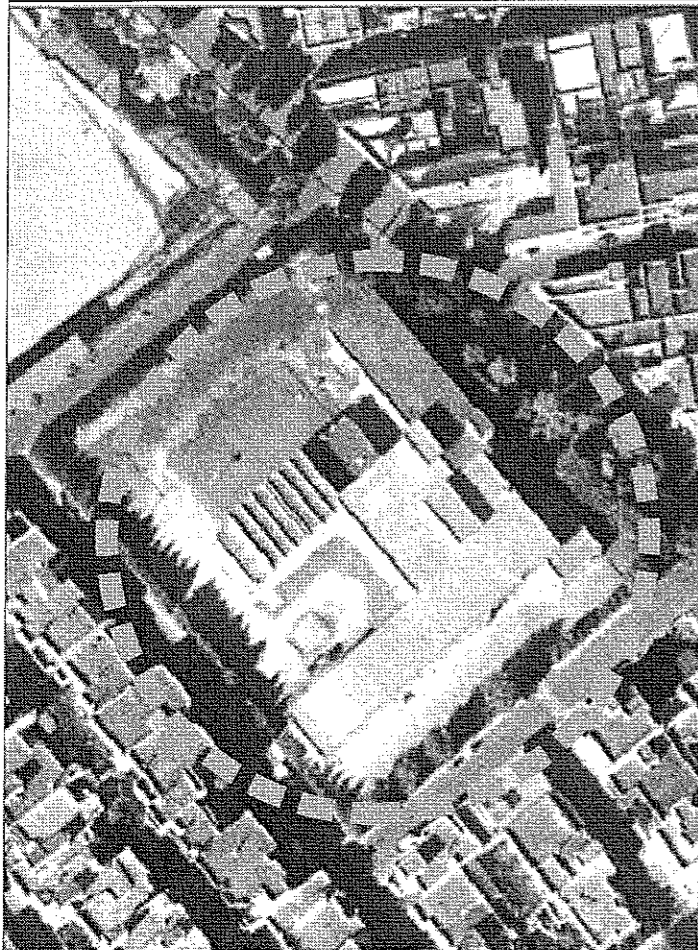
-EDIFICIO G- Scuola Media Don Innocenzo Negro



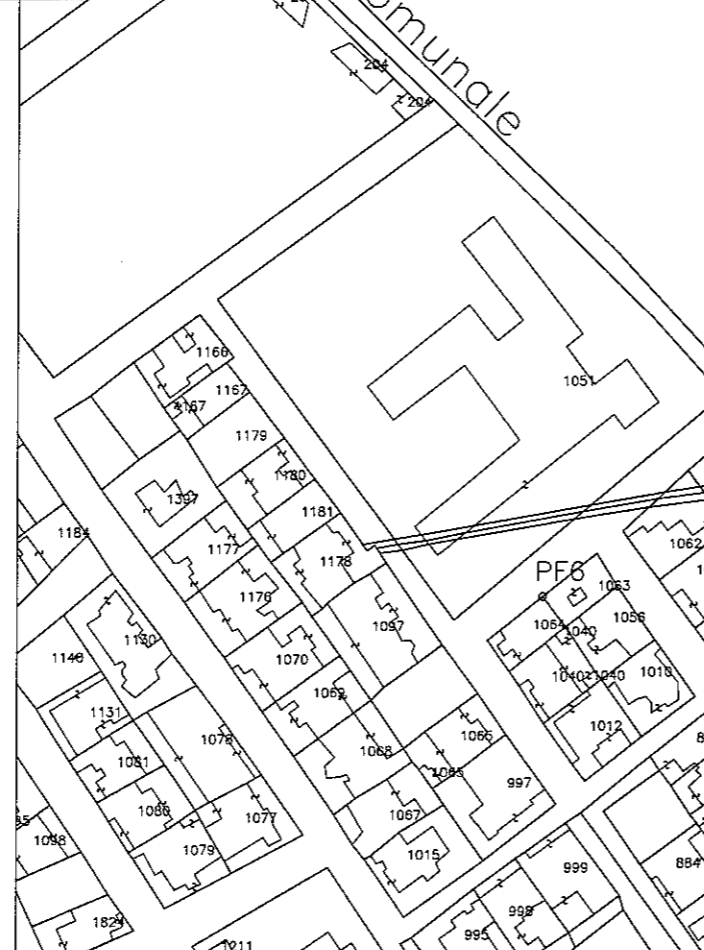
Inquadramento territoriale: Stralcio aerofotogrammetrico scala 1:10.000



Area di interesse scala 1:1000



Stralcio Ortofoto: fonte SIT Regione Puglia

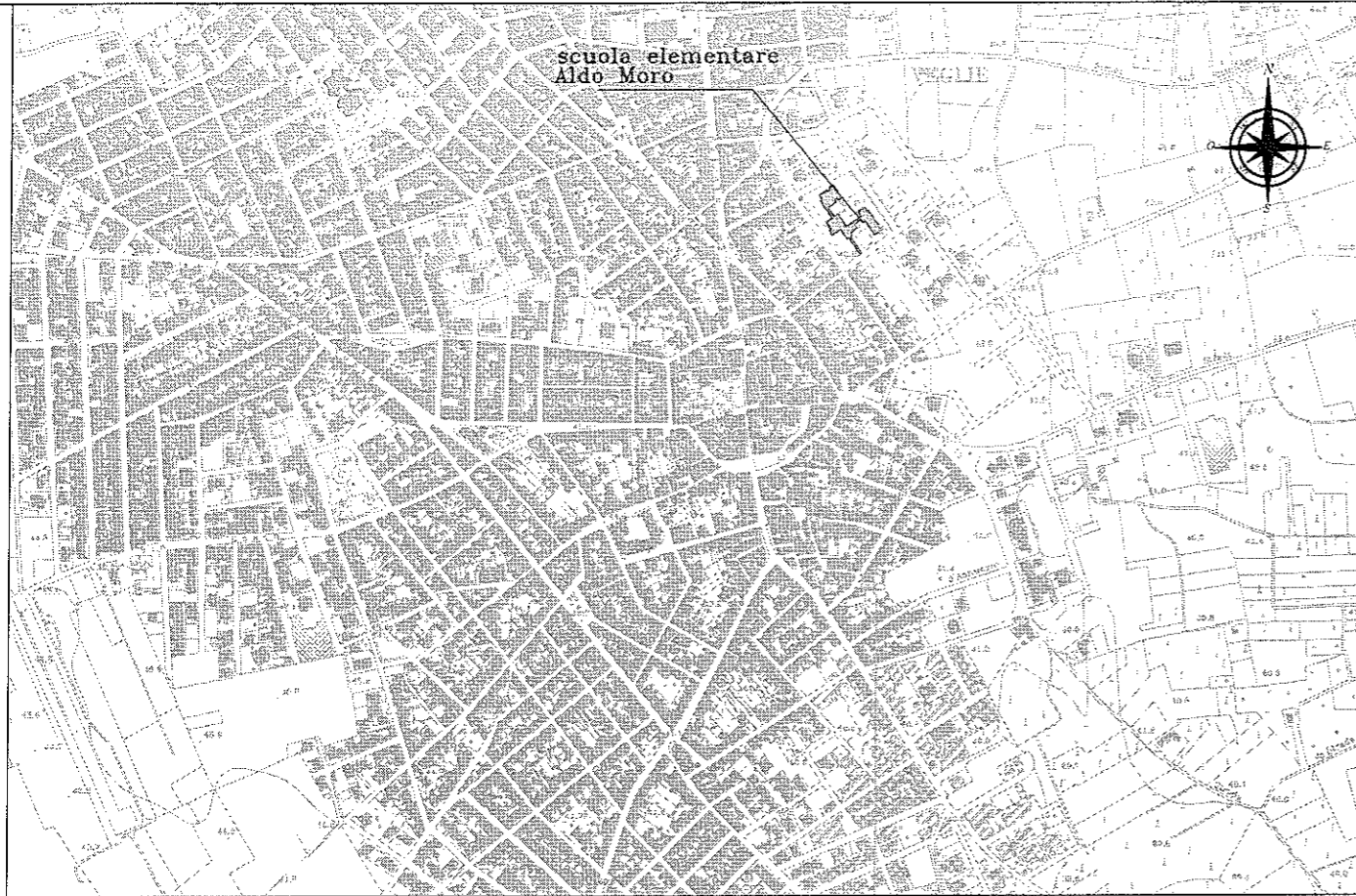


Stralcio catastale foglio 22 p.IIa 1051 scala 1:2000

Stampa circolare: n. 1524, ANTONIO ANGLANO Architetto, COMUNE DI VEGLIE * SERVIZIO AMBIENTE * SERVIZI CULTURI PAESAGGISTI E CONSERVATORI



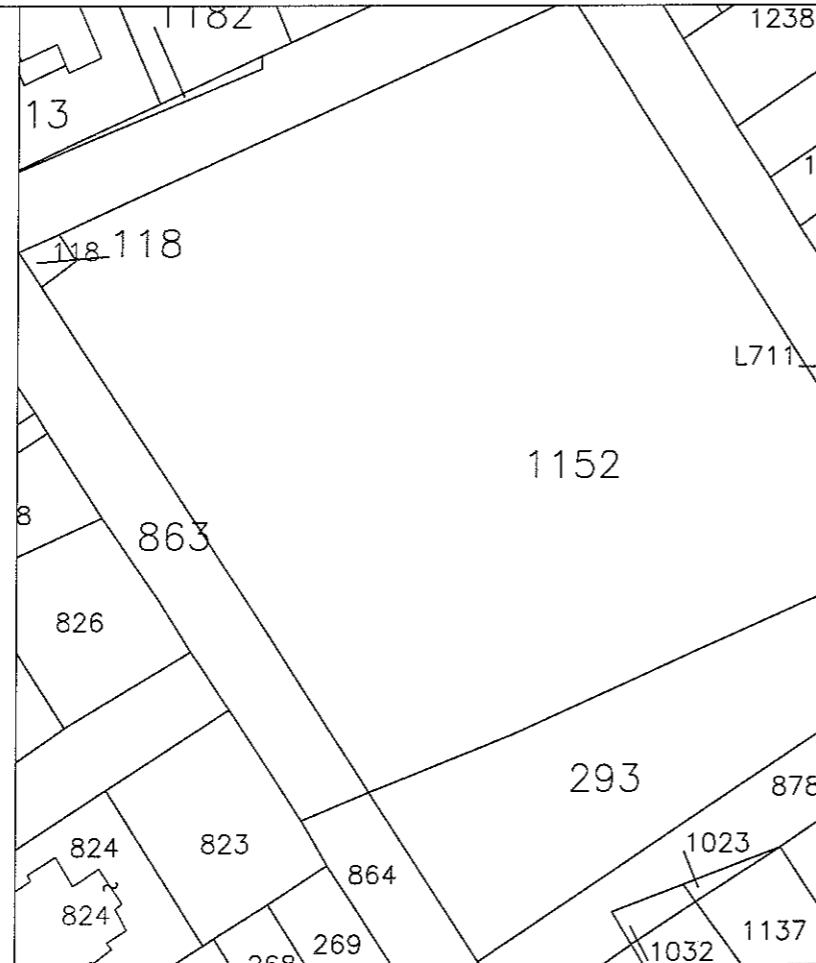
-EDIFICIO E- Scuola Elementare Aldo Moro



Inquadramento territoriale: Stralcio aerofotogrammetrico scala 1:10.000



Area di interesse scala 1:1000



Stralcio Ortofoto: fonte SIT Regione Puglia

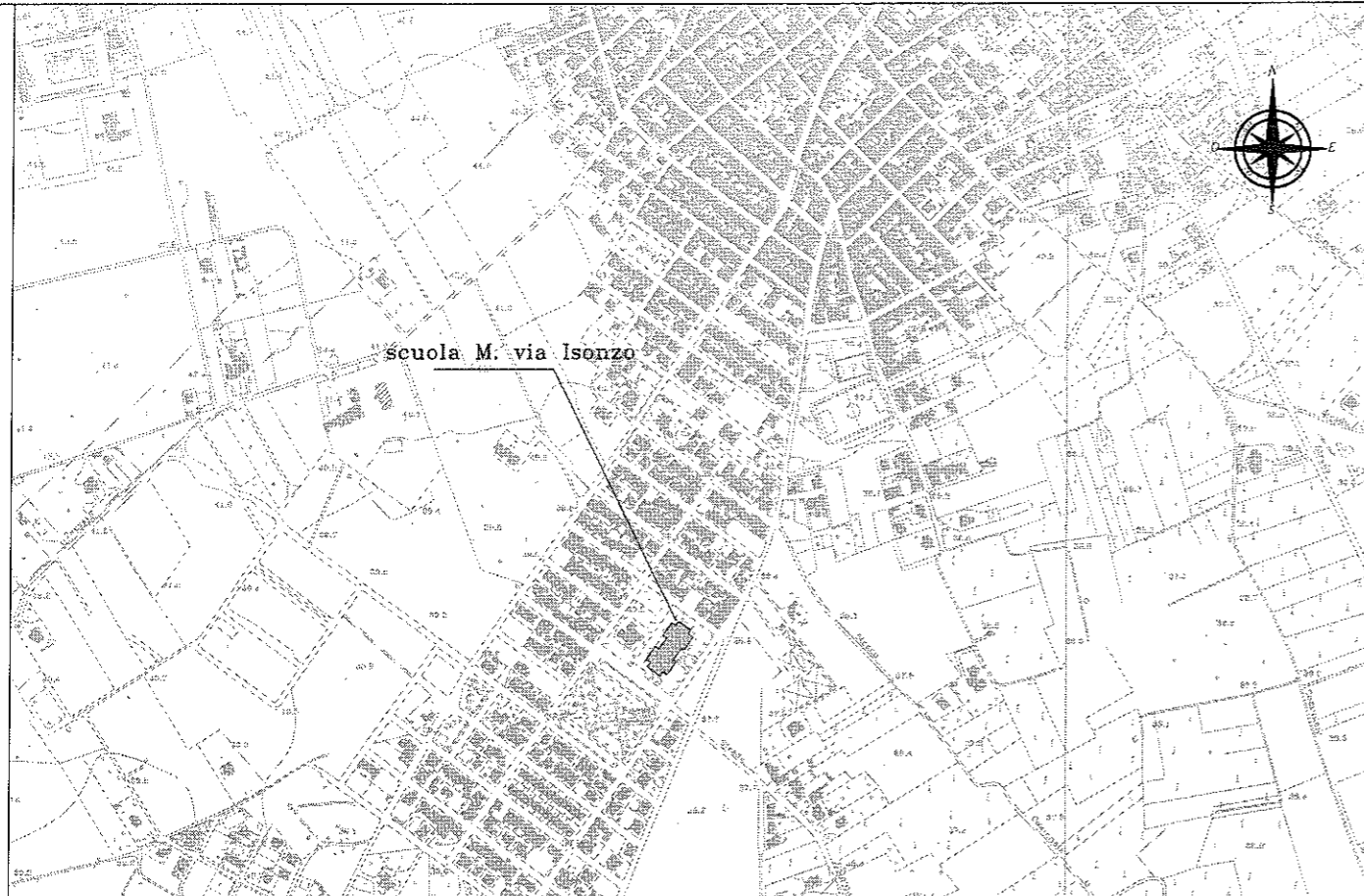
Stralcio catastale foglio 24 p.lle 1152-293 scala 1:1000



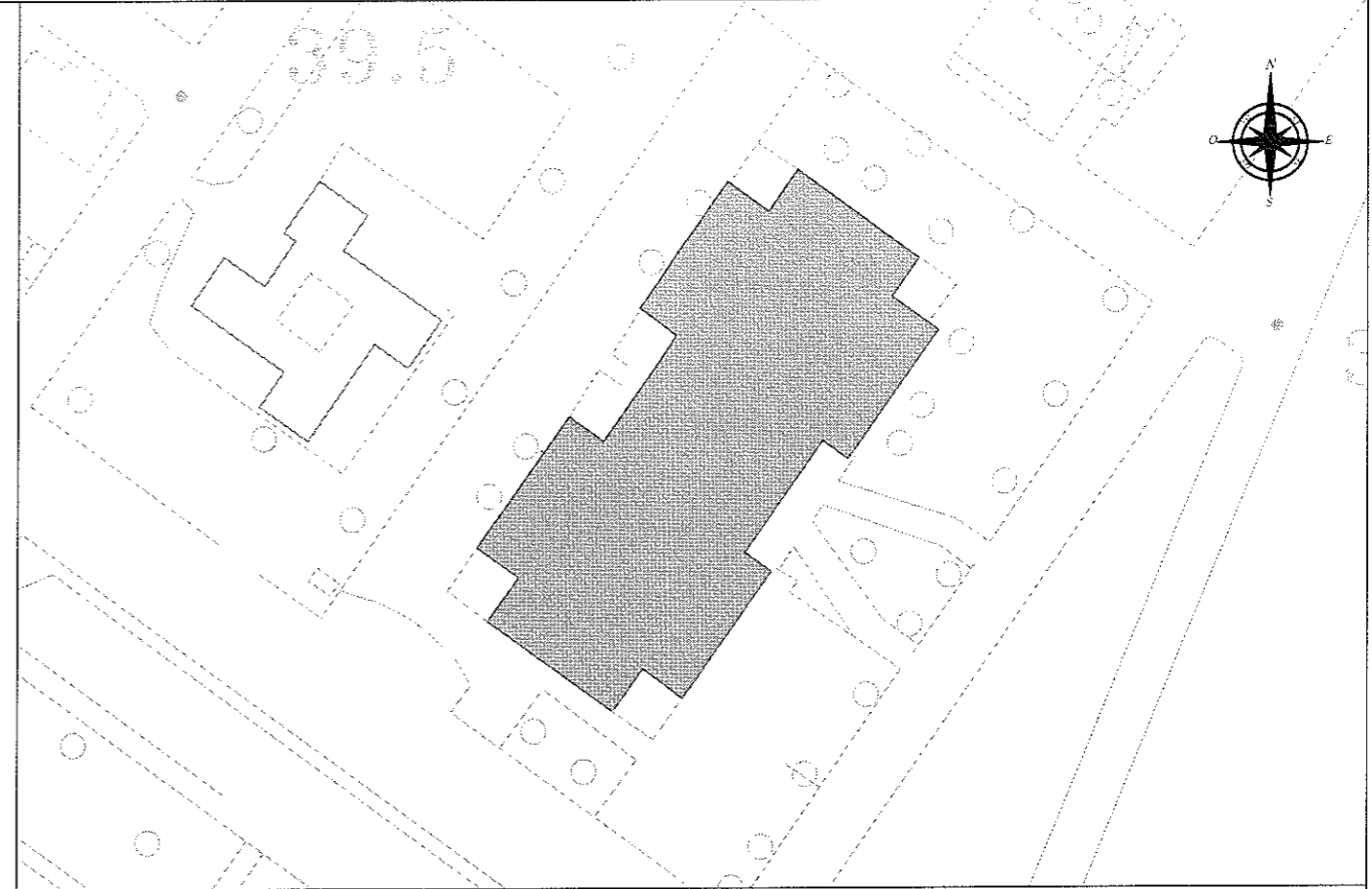
Antonio Anglaro



-EDIFICIO D- Scuola M. Isonzo



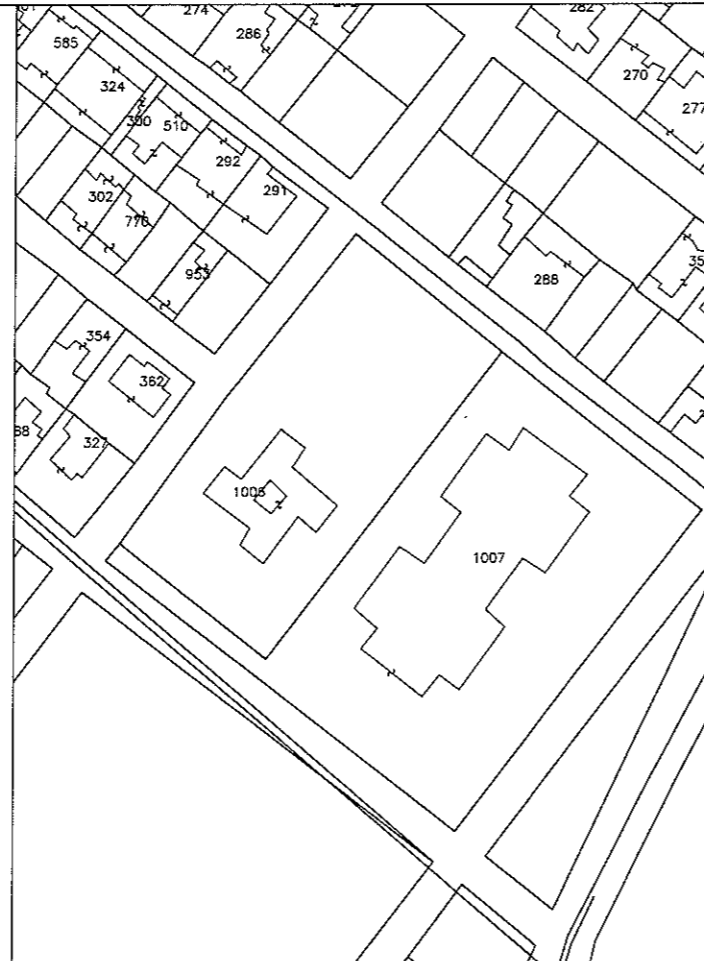
Inquadramento territoriale: Stralcio aerofogrammetrico scala 1:10.000



Area di interesse scala 1:1000



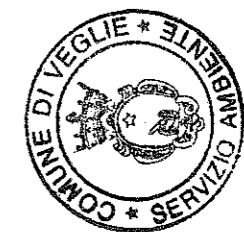
Stralcio Ortofoto: fonte SIT Regione Puglia



Stralcio catastale foglio 40 p.IIa 1007 scala 1:2000



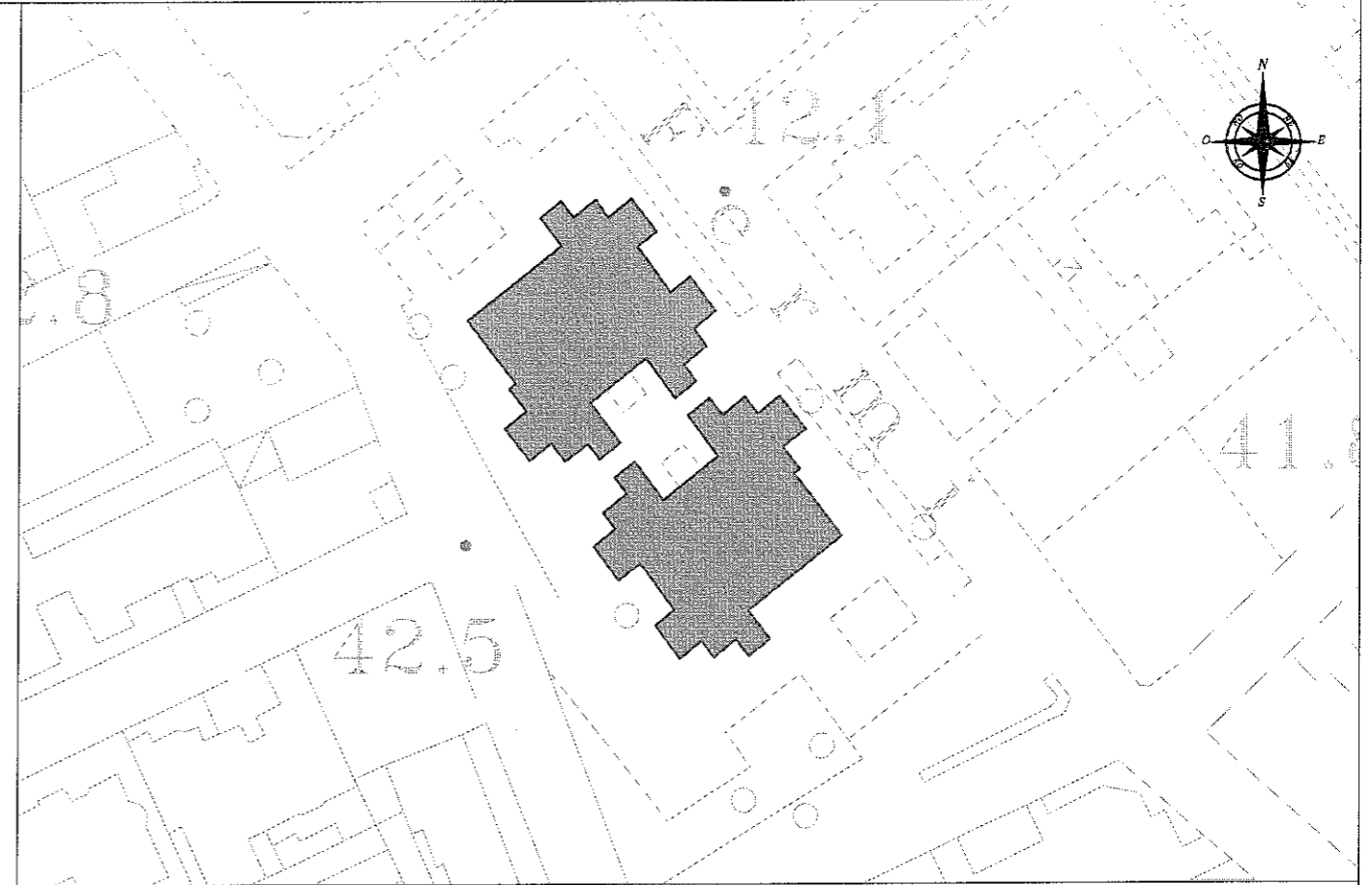
Alfonso...



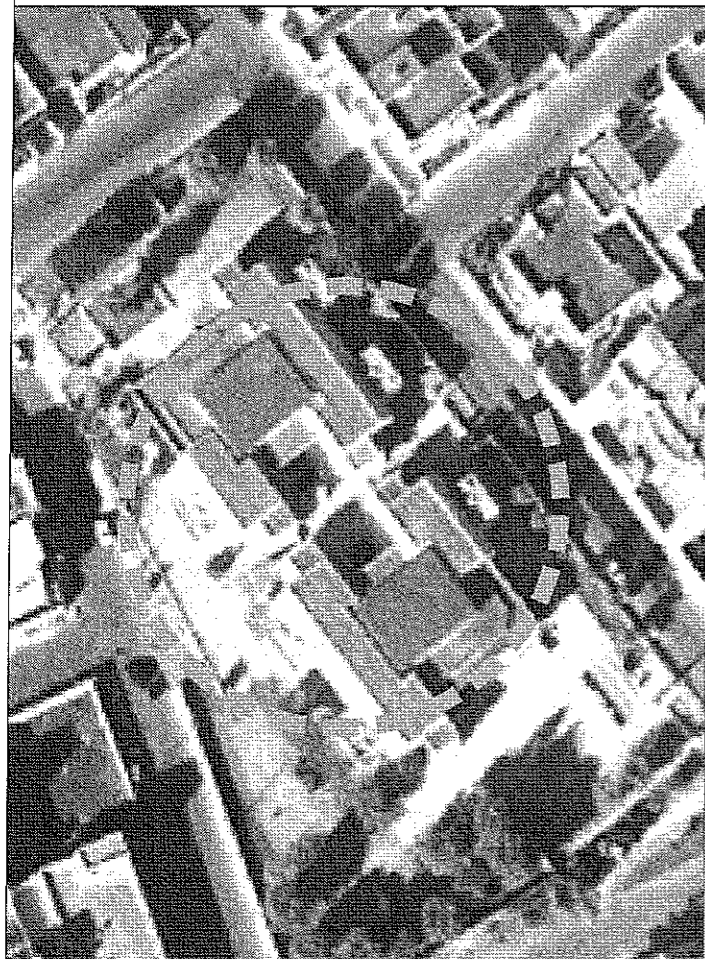
-EDIFICIO C- Scuola Materna Gianni Rodari



Inquadramento territoriale: Stralcio aerofotogrammetrico scala 1:10.000



Area di interesse scala 1:1000



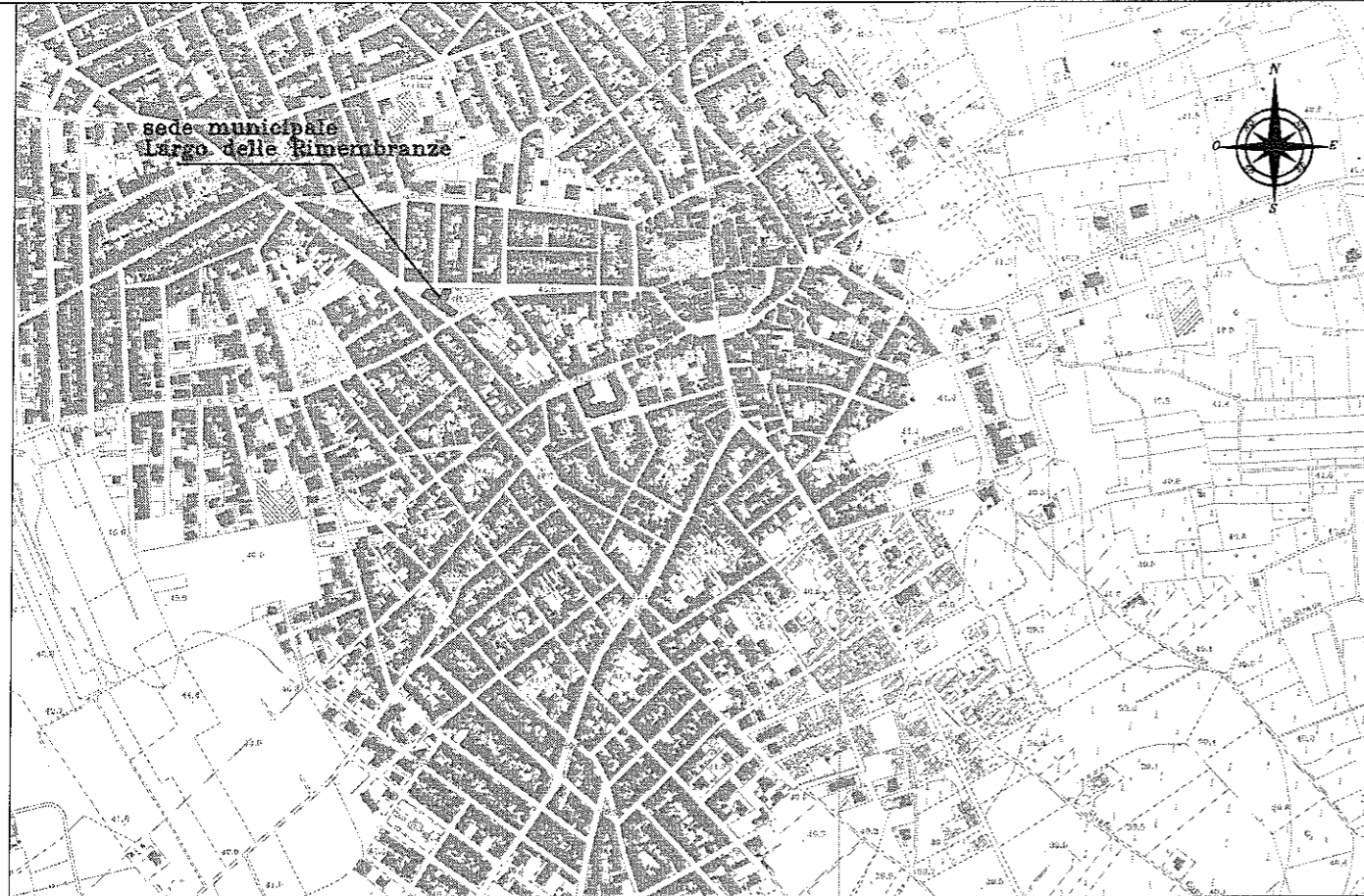
Stralcio Ortofoto: fonte SIT Regione Puglia



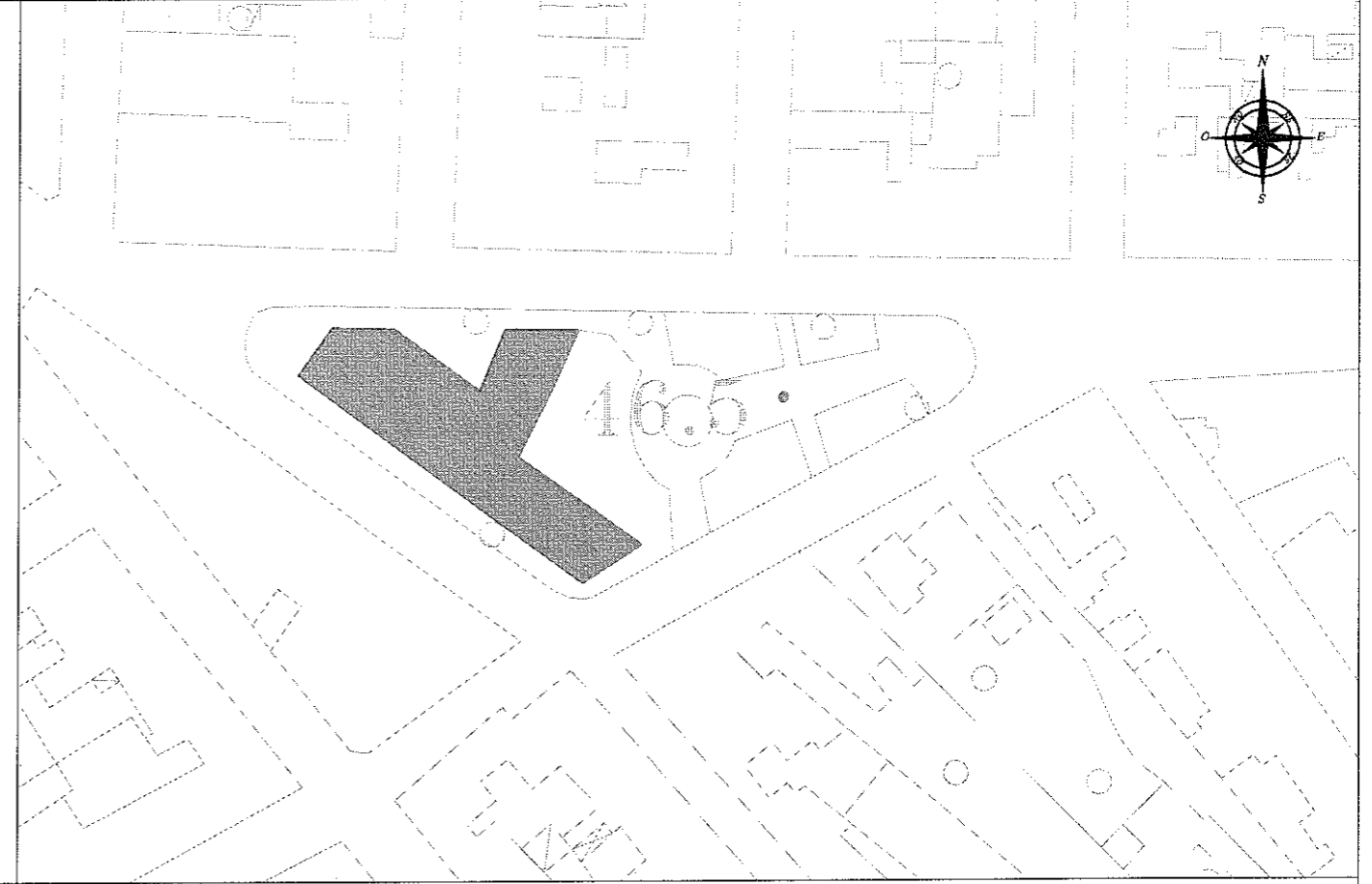
Stralcio catastale foglio 22 p.lla 1277 scala 1:2000



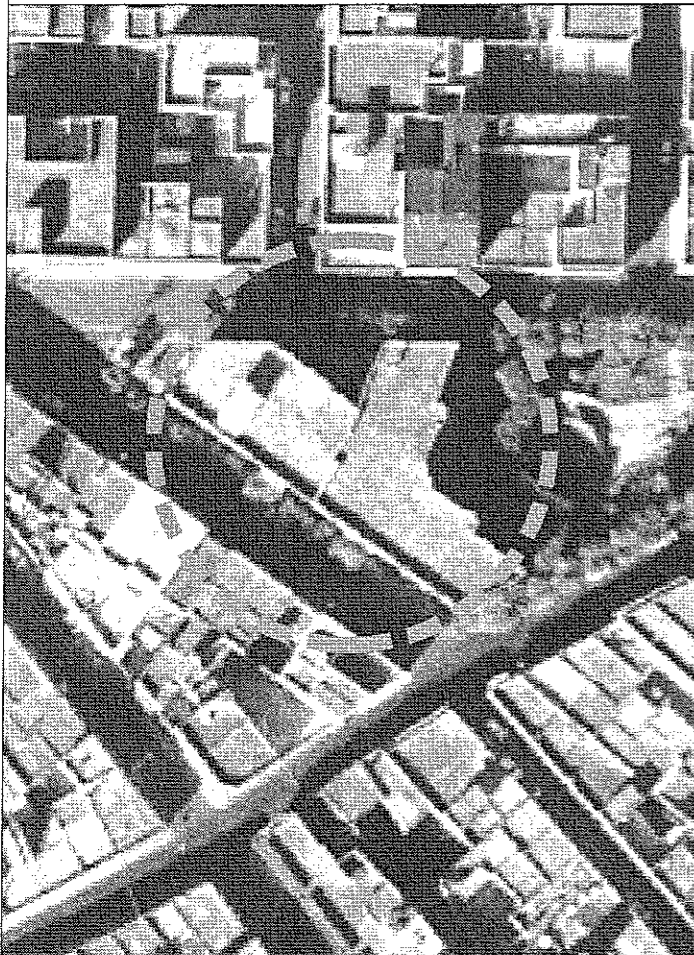
-EDIFICIO B- Sede Municipale Largo Rimembranze



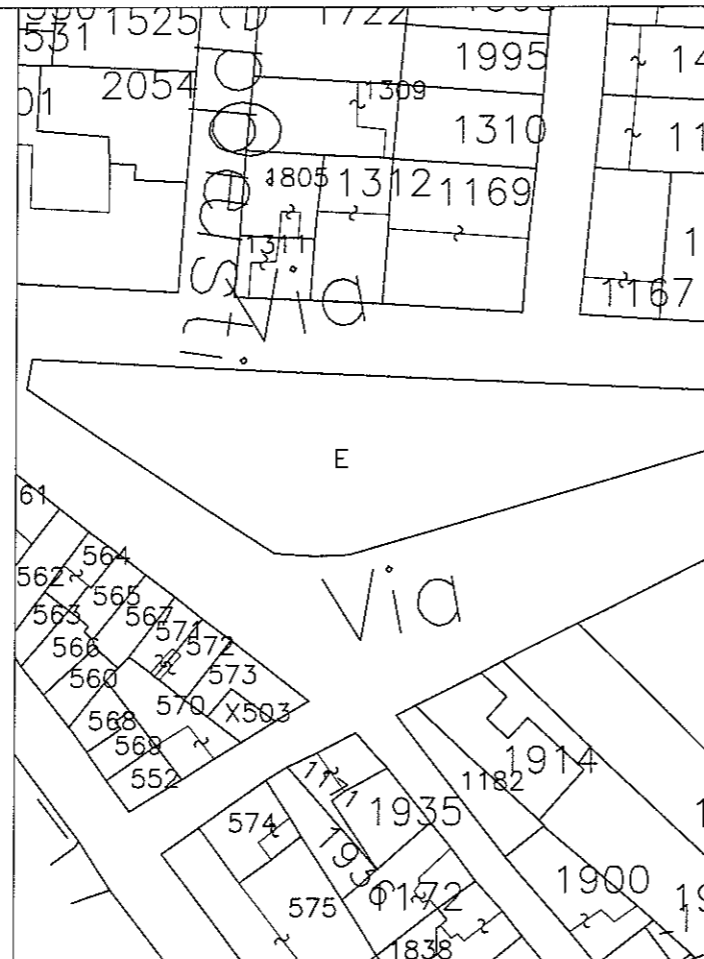
Inquadramento territoriale: Stralcio aerofotogrammetrico scala 1:10.000



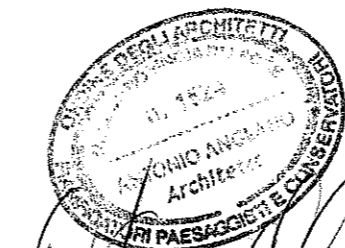
Area di interesse scala 1:1000



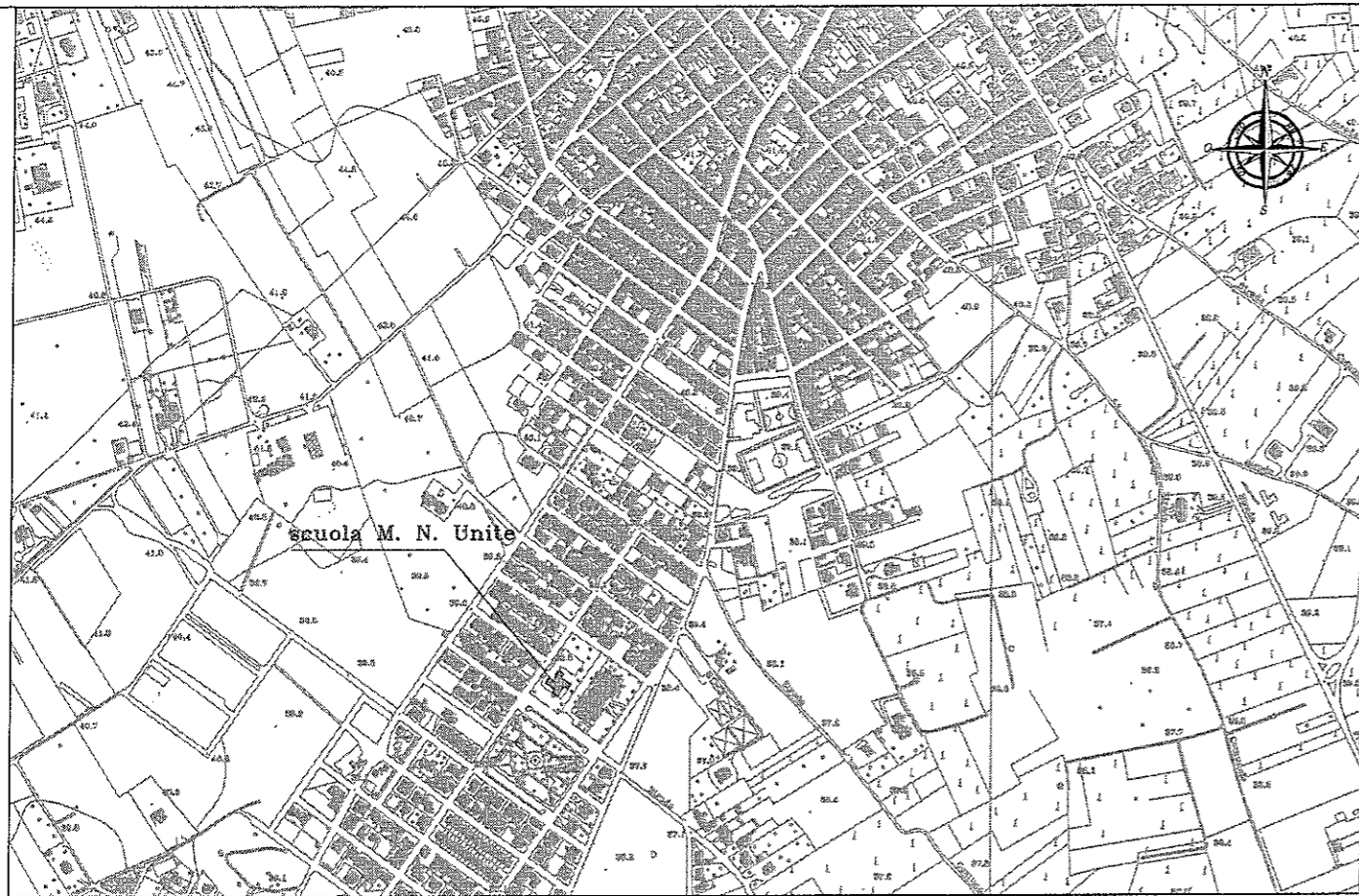
Stralcio Ortofoto: fonte SIT Regione Puglia



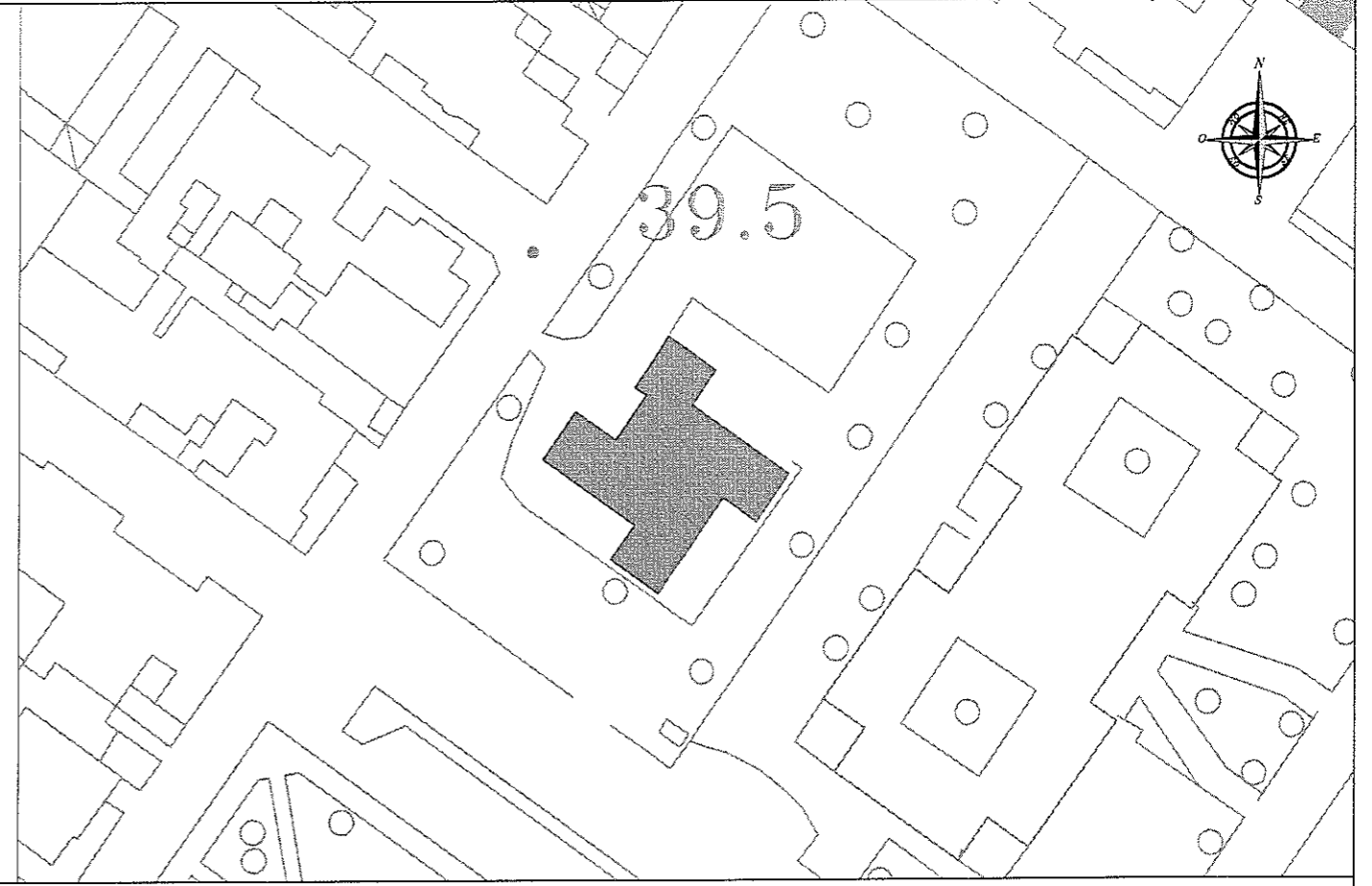
Stralcio catastale foglio 29 p.IIa scala 1:1000



-EDIFICIO A- Scuola M. N.Unite



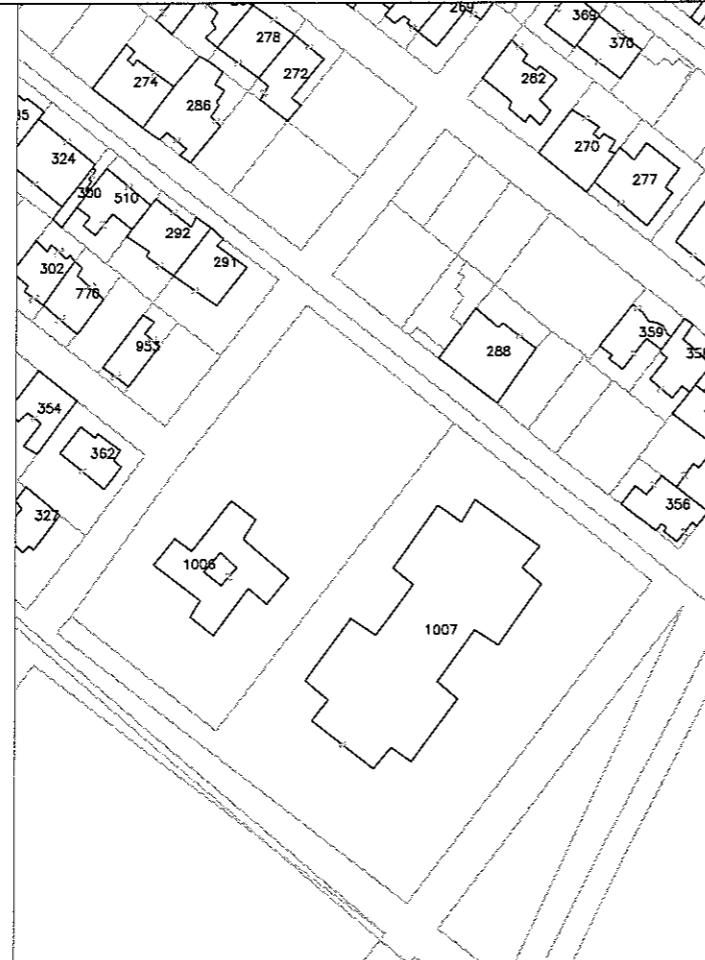
Inquadramento territoriale: Stralcio aerofotogrammetrico scala 1:10.000



Area di interesse scala 1:1000



Stralcio Ortofoto: fonte SIT Regione Puglia



Stralcio catastale foglio 40 p.IIa 1006 scala 1:2000

